



# Gwernllwyn Care Home

*Listening Beyond the Words*

@gwernllwyncarehome



01269 845214



info@gwernllwyncarehome.co.uk

# A Warm Welcome to Gwernllwyn Care Home from our team.



*Will James*

**FOUNDER/OWNER**  
**SYLFAENYDD/PERCHENNOG**



*Trudy Williams*

**RESPONSIBLE INDIVIDUAL**  
**UNIGOLYN CYFRIFOL**



*Julie Edwards*

**REGISTERED MANAGER**  
**RHEOLWR COFRESTREDIG**





## **Who are Gwernllwyn Care Home?**

**Our Vision & Ethos**

**Our Values**

**Our Team**

**Our Care Objectives**

**Person Centered Care**

**Range of needs we can support**

**What is in our Home**

**Our Facilities**

**Our Services**

**How to arrange care with us**

**Accreditations**

**Where to find us**

**Want to know more?**

**@gwernllwyncarehome**



**01269 845214**



**info@gwernllwyncarehome.co.uk**



# Who are Gwernllwyn Care Home?



**Gwernllwyn Care Home is situated in the village of Cross Hands, Carmarthenshire. Although a rural area, it is well served by major road systems and is conveniently close to the M4.**

**At Gwernllwyn Care Home we provide residential care and accommodation for a maximum of 68 individuals. We support adults; both men and women.**

**Gwernllwyn Care Home aims to provide a service which supports individuals to achieve the best possible outcomes in respect of their individual needs. We do this by providing a personalised care and support service which meets the assessed needs in a way that each individual prefers. At Gwernllwyn, the foundation of our practice is person centred care.**

**As we are registered with the Care Inspectorate Wales (CIW), you can rest assured that the service you receive is fully regulated and inspected. Our reports are available on our website or CIW website.**

**We strongly believe that Gwernllwyn Care Home provides a safe and welcoming environment for all who use and provide our service.**

**@gwernllwyncarehome**



**01269 845214**



**info@gwernllwyncarehome.co.uk**



**Arolygiaeth Gofal  
Cymru  
Care Inspectorate  
Wales**

# Our Vision & Ethos



**Our Vision is for Gwernllwyn to be a positive choice for older people and to be recognised and respected for outstanding practice that has positive outcomes for each individual we care for.**

**We understand that moving to a new home is a major life-change, which is why we have created a 'home from home' where each individual is affirmed, feels valued and respected and is given the support and encouragement they need to live their lives with meaning and purpose.**

**@gwernllwyncarehome**



**01269 845214**



**info@gwernllwyncarehome.co.uk**



# Our Values



**We believe that people's value and individuality should not diminish as a result of their increased need for support.**

**We aspire to:**

**To listen beyond the words.**

**To be open and accessible.**

**To work with integrity.**

**To be professional in all that we do.**

**To look to the future, adapt and remain relevant.**

**We aim to provide and maintain homely, first class accommodation.**

**To recruit, train and retain staff so that individuals can enjoy skilled continuity of care that will enable them to achieve their optimum state of health and wellbeing.**

**@gwernllwyncarehome**



**01269 845214**



**info@gwernllwyncarehome.co.uk**



# Our Team



**At Gwernllwyn Care Home, we are committed to providing the highest standard of care, and our dedicated, focused and qualified care team are trained to ensure that their skills and knowledge continue to be relevant and understand the importance of professional development.**

**We provide the best standard of care and the wellbeing of all our residents remains paramount.**

**Our team is passionate about supporting our residents and strive to ensure that each individual is treated with kindness, respect and compassion .**

**Our team are committed to care.**

**@gwernllwyncarehome**



**01269 845214**



**info@gwernllwyncarehome.co.uk**



# Our Care Objectives



**To provide a safe, caring and stimulating environment that recognises the need for personal fulfillment.**

**To recognise the uniqueness of individuals and treat them with dignity and respect at all times.**

**To respect individual requirement for privacy and treat all information relating to individuals in a confidential manner.**

**To respond, sensitively, to individuals physical, emotional, social, intellectual and spiritual needs.**

**To listen to and support individuals to express their wishes.**

**To respect and encourage the right of all individuals to be independent.**

**To enable individuals to develop meaningful relationships with staff and experience warmth and attachment.**

**To create a living environment that is collaborative, supportive and empowering, thereby upholding the human and citizenship rights of all who live, work and visit here.**

@gwernllwyncarehome



01269 845214



info@gwernllwyncarehome.co.uk



# Person Centred Care

**We practice person-centred care at Gwernllwyn Care Home. This approach will always be the foundation of the care we provide.**

**What we do is dependent on each individuals' preferences, needs and wants.**

**Our practice empowers individuals to take control and makes them the expert in their own lives.**

**Being person-centred is about focusing care on the needs of people as unique individuals.**

**We ensure that each person's preferences, needs and values guide decisions, to provide care that is respectful and responsive.**



@gwernllwyncarehome



01269 845214



info@gwernllwyncarehome.co.uk

# Range of needs we can support

Residential Care | Residential Dementia Care | Respite Care | Day Care

**At Gwernllwyn Care Home, we understand that individual's needs fluctuate and change, therefore, we adopt a flexible approach to the support that we offer.**

**We accept that continuous review of individual needs is essential.**

**We work closely with the local health board in meeting the needs of people who may have clinical requirements within their care plan.**

**The local health board support with meeting end of life needs and we have an excellent working relationship to ensure the highest level of care is delivered. Gwernllwyn Care Home does not however offer nursing care.**

**Ty Pilipala is home to individuals living with dementia. Butterflies have a powerful representation of life and its transformation, at every stage.**



@gwernllwyncarehome



01269 845214



info@gwernllwyncarehome.co.uk



# What is in Our Home

**Gwernllwyn Care Home offers an ultimate care experience, with a wide range of amenities and activities to ensure that all individuals get the very best.**

**Our dedicated staff are committed to empowering individuals to live a fulfilled and vibrant lifestyle.**

**We offer a variety of activities and social events to ensure that our residents can stay engaged and connected with the world around them.**



@gwernllwyncarehome



01269 845214



info@gwernllwyncarehome.co.uk



# Our Facilities

The onsite facilities are exceptional, there are three outdoor patio areas.

A function room with a licensed bar which hosts a Sunday Lunch weekly, events, gatherings and entertainment which forms part of the services.

A state of the art Hairdressing and Beauty Salon offers services to meet a variety of preferences equipped with adapted and professional fixtures and fittings.

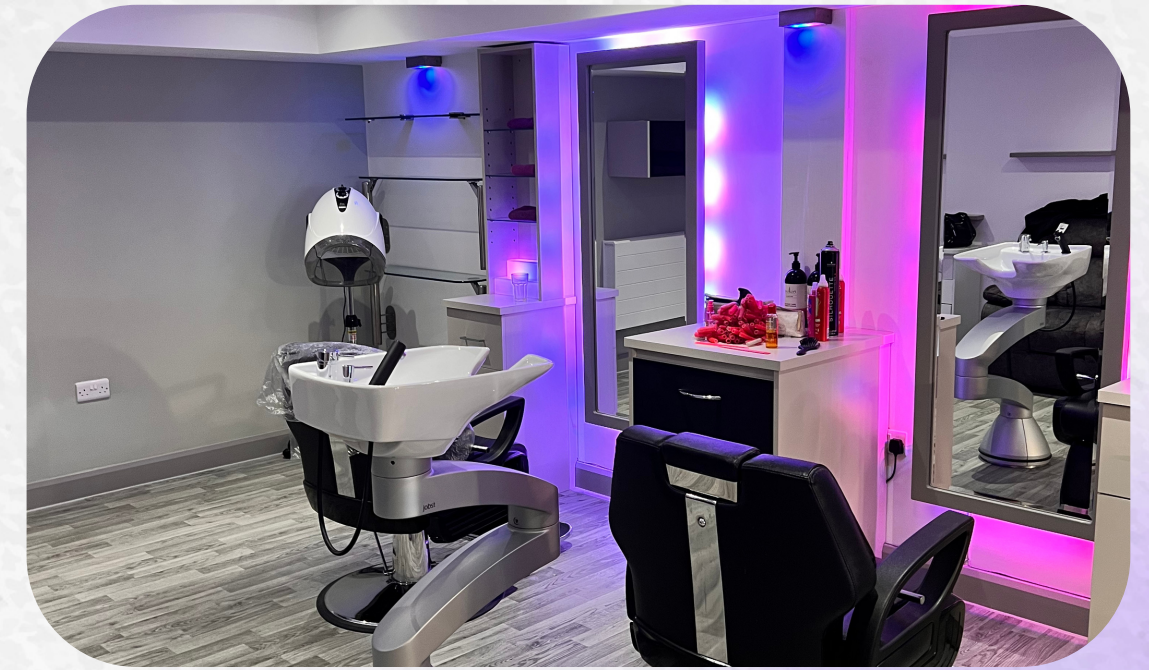
A convenience shop is located within the home which will stock a variety of gifts and essential items.

The first floor is home to an innovative Tenpin Bowling Alley which consists of two half length lanes for family entertainment. The custom design alleys will be enjoyed by all ages and a great way to bring people together.

Coffee Alley, our very own coffee shop which serves refreshments and delicious homemade cakes.

You will be blown away by the high quality amenities.

## Our State of the Art Hairdressers.



## Tenpin Bowling Alley.



@gwernllwyncarehome



01269 845214



info@gwernllwyncarehome.co.uk

  
Gwernllwyn Care Home  
*Listening Beyond the Words*

# Our Services

**Seasonal healthy & nutritious meals (with all special dietary requirements available).**

**Laundry Services**

**Dentist appointments**

**Optician appointments**

**Chiropody Appointments**

**Doctor appointments**

**Lifts**

**Wheelchair access**

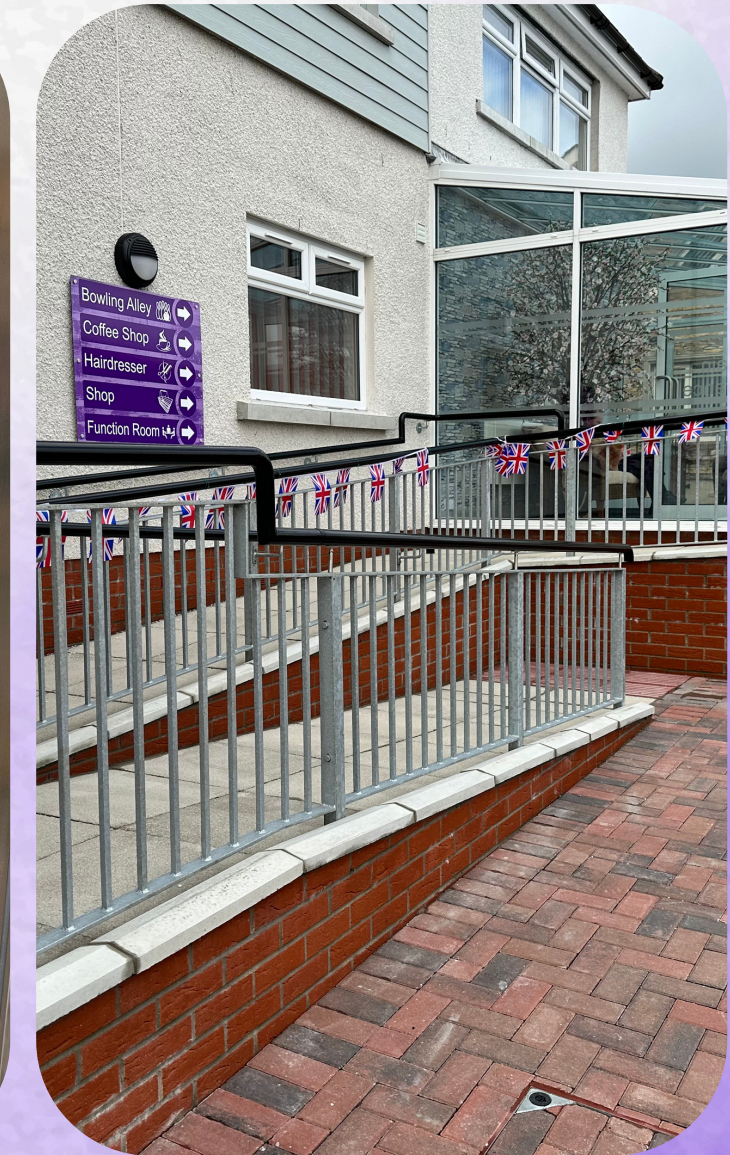
**Internet Access**

**All our Services and Facilities are fully explained in our Statement of Purpose, which you can access via our website.**

**[www.gwernllwyncarehome.co.uk](http://www.gwernllwyncarehome.co.uk)**



**Stretcher Lift**



**Wheelchair Ramp**

**@gwernllwyncarehome**



**01269 845214**



**info@gwernllwyncarehome.co.uk**

# Costs and Funding



**Please contact us for information on the cost of our care.**

**Whether you are being financially supported by a local authority or are privately funding your care, we can help.**

**You may wish to enquire personally or you can be supported with the process by a family member or via your local authority. We are happy to have the initial conversations and will guide and advise you on a route that best suits you.**

**@gwernllwyncarehome**



**01269 845214**



**info@gwernllwyncarehome.co.uk**



# How to arrange care with us



**If you or your relative would like to consider coming to live at Gwernllwyn Care Home then please inform us, by email, telephone or in person. Following the initial discussion, we will need to arrange a pre-admission assessment. This includes liaising with you, your family with your permission of course and any professionals who may be involved with your care.**

**A decision will be made at the time of assessment or shortly after on whether Gwernllwyn Care Home and the staff team have the skills and abilities to meet your individual needs. If your needs can be met and you wish to live at Gwernllwyn Care Home a personal care plan detailing all your needs and outlining information relating to your past, medical history, family, hobbies, likes and dislikes etc will be developed. All that will be left to do at this stage is to decide when you would like to move in, and we can help facilitate the move and ensure that this is a smooth transition.**

**A warm welcome awaits if you would like to visit our friendly team and residents.**

**@gwernllwyncarehome**



**01269 845214**



**info@gwernllwyncarehome.co.uk**



# Gallery

**Function Room**



**Cafe**



**Hairdressers**



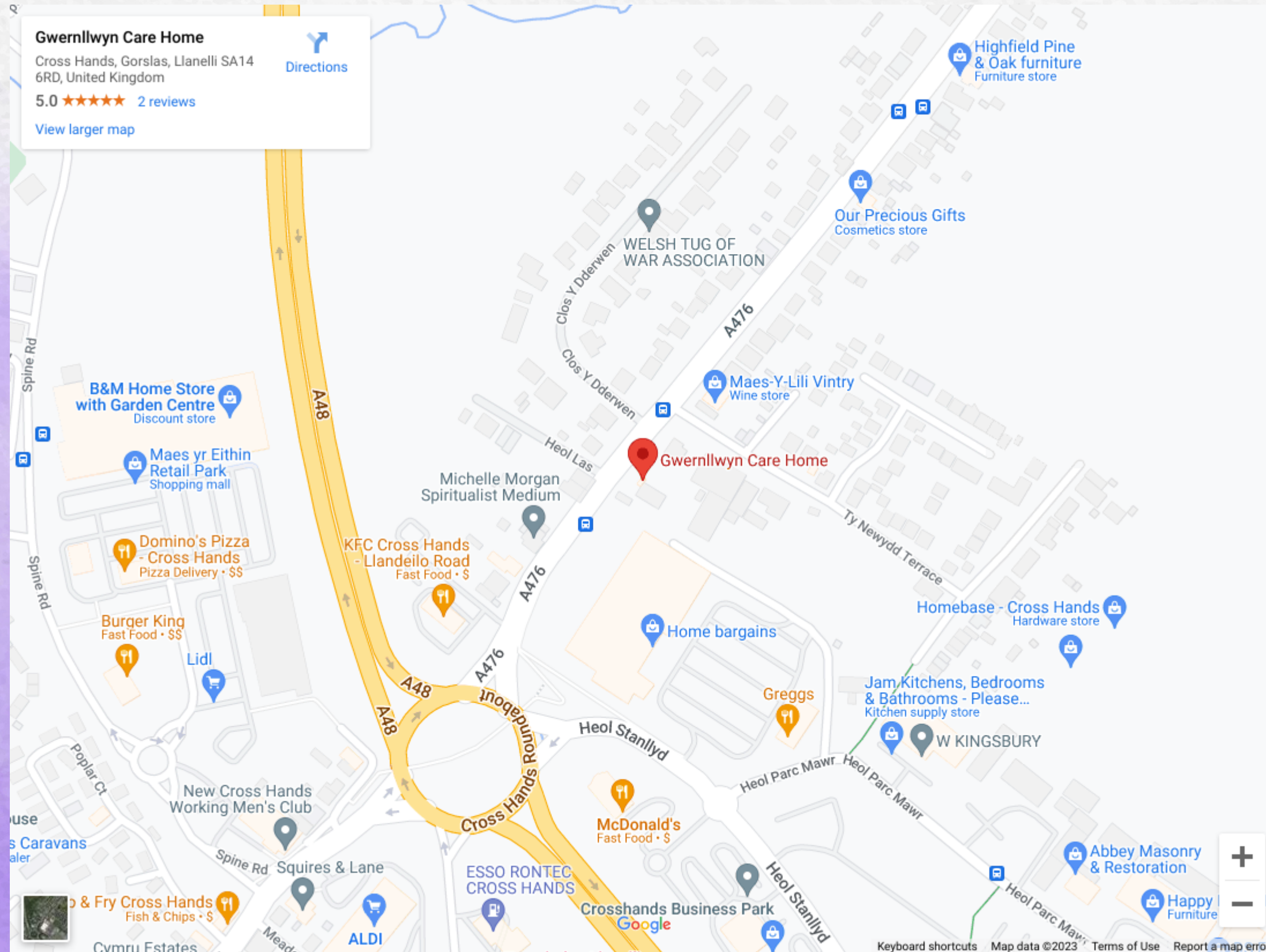
**Dining Area**

**Shop**

**Bowling Alley**



# Where to find us



**Gwernllwyn Care Home**

*Listening Beyond the Words*



**01269 845214**



**[info@gwernllwyncarehome.co.uk](mailto:info@gwernllwyncarehome.co.uk)**



**[@gwernllwyncarehome](https://www.instagram.com/gwernllwyncarehome)**

# Want to know more?

Come and meet our friendly team.



*Trudy Williams*

RESPONSIBLE INDIVIDUAL  
UNIGOLYN CYFRIFOL



*Julie Edwards*

REGISTERED MANAGER  
RHEOLWR COFRESTREDIG



**01269 845214**



**info@gwernllwyncarehome.co.uk**



**www.gwernllwyncarehome.co.uk**

**Visit our website & book an appointment today.**

